



**ASBESTOS SERVICES UK LTD**



Chas Accredited  
The Contractors Health and Safety Scheme



constructionline  
UK'S LEADING CONTRACTORS' ASSOCIATION



CONSTRUCTION SKILLS  
CERTIFICATION SCHEME

Working  
towards  
a greener  
future...



**THE STONE HOUSE**

REDEVELOPMENT  
PROJECT



[www.asbestoservices.uk.com](http://www.asbestoservices.uk.com)



# The Stone House: Grade II listed site

◆ A major redevelopment project requiring sympathetic restoration to meet the needs of future residential occupiers while preserving the architectural and historic significance of this 19th Century Grade II listed building and its setting.

◆ **Project headed by The PJ Livesey Group**  
The UK's leading specialist property developer, providing unique new homes in outstanding locations throughout the UK.

◆ **Development partners:**  
The PJ Livesey Group  
Ward Homes  
Homes & Communities Agency  
Moat

◆ **Specialist contractors:**  
Asbestos Services UK Ltd  
Mark Wakefield Demolition Ltd

“ On redevelopment projects of such local historical significance, there can be no compromise on integrity.

It is therefore crucial that only high-calibre specialists with the requisite expertise and experience are used. ”

*An ambitious project to bring history back to life...*



**THE STONE HOUSE**





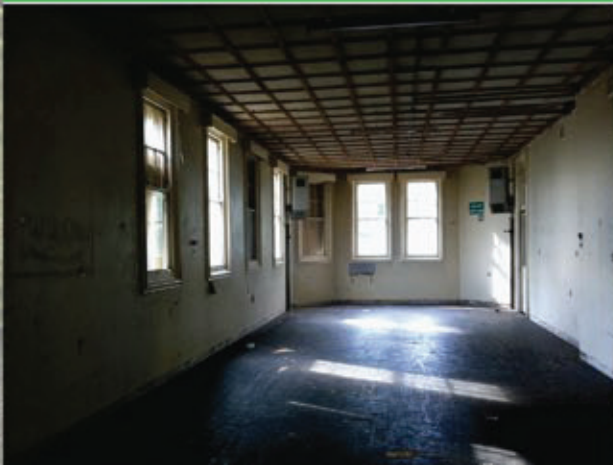


### Case Study: The Stone House, Dartford, Kent

Asbestos Services UK Ltd is proud to have been selected as a contractor to play a significant role in ensuring that this 15 acre site and its grade II listed buildings are given a sustainable new lease of life.

As this was a large-scale, challenging job with many complications, we are proud that our team got the job done successfully without calling on any outside help and without interfering with or impacting other works on site. A wide range of asbestos tasks were carried out on this complex project, including:

- The strategic planning and skilful building of live working enclosures to remove asbestos materials located within a network of underground tunnels/duct areas located underneath the original site plans.
- Removal of all identified asbestos containing materials under fully controlled conditions from all floor levels throughout the site.
- Careful dismantling, using articulated access equipment, of a 1200 square metre asbestos roof which was brought down to ground level, removed and disposed of, paying the greatest attention to safety at every stage.







# Total solutions for all asbestos, clearance and environmental hygiene matters

Asbestos removal and encapsulation

Asbestos surveys and consultation

Safe collection and disposal of asbestos and other waste

Soft strip and light demolition works

Environmental hygiene/cleaning services  
(Urban cleaning, pigeon contamination/graffitti removal)



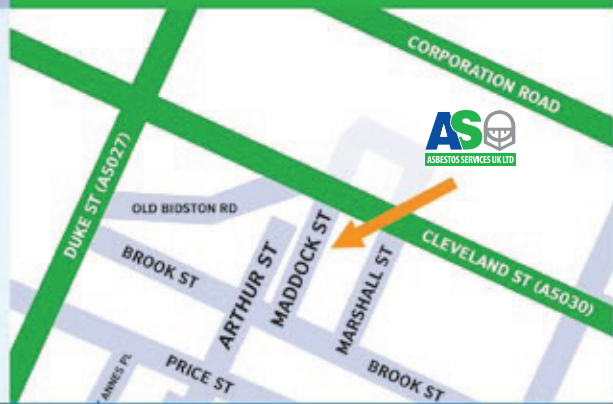
Total asbestos services on a national scale for government, commercial, industrial and domestic sectors



**Asbestos Helpline:**  
**0800 876 6440**

Asbestos Services UK Ltd  
Unit 5  
Maddock Street  
Birkenhead  
CH41 4LA

Tel/Fax: 0151 647 3555  
Mobile: 07967 654 091  
E-mail: [info@asbestoservices.uk.com](mailto:info@asbestoservices.uk.com)  
Web: [www.asbestoservices.uk.com](http://www.asbestoservices.uk.com)



Visit our website: [www.asbestoservices.uk.com](http://www.asbestoservices.uk.com)